

# Poplar Place Building

## Spaces For Lease

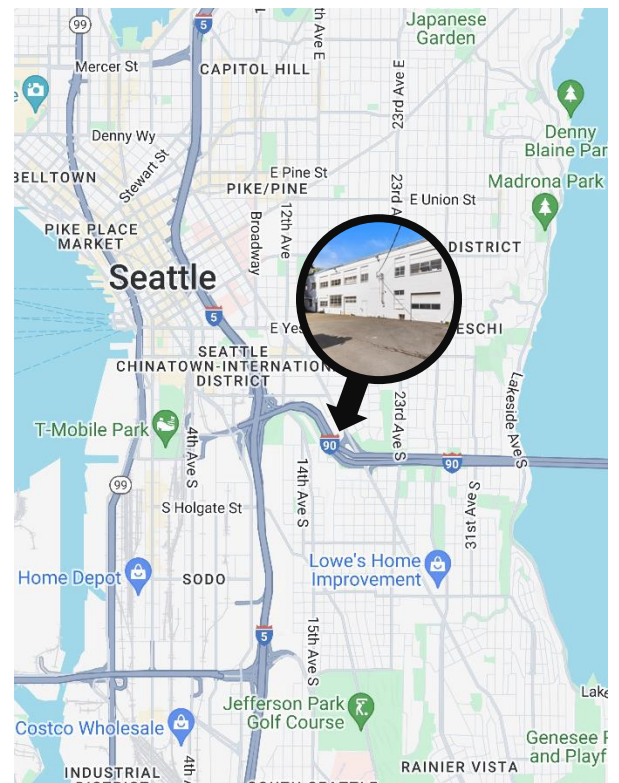
1128 Poplar Pl S. Seattle, WA 98144



## Space Availability Details

Creative Environment filled with artists, makers and small businesses.

- **Unit A:**
  - Approximately 670 Square Feet
  - 1 GL Door into Yard Area
  - 1 parking stall
  - Available March 1, 2025
  - Gross Monthly Rent: \$1,800
- **Unit B:**
  - Approximately 730 Square Feet
  - 1 parking stall
  - Available March 1, 2025
  - Gross Monthly Rent: \$1,950
- **Unit C:**
  - Approximately 660 Square Feet
  - 1 parking stall
  - Available March 1, 2025
  - Gross Monthly Rent: \$1,800
- **Unit D:**
  - Approximately 200 Square Feet
  - Available March 1, 2025
  - Gross Monthly Rent: \$400



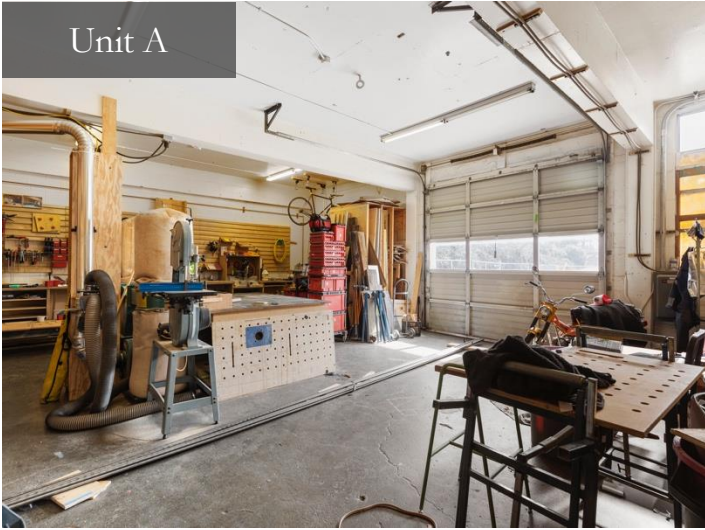
**DEVIN HASKELL**

Senior Associate

206.486.1428

devin@srecommercial.com

Unit A



Unit B



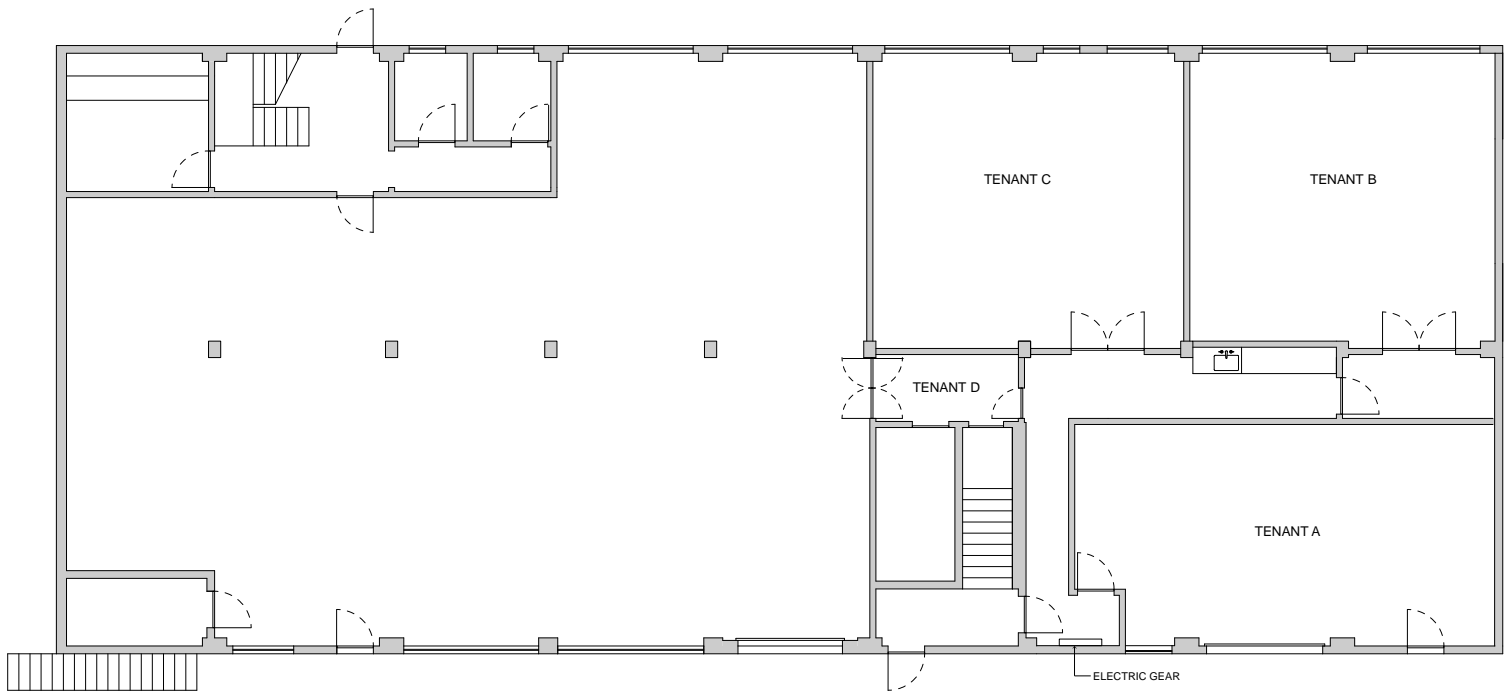
Unit C



Unit D



# Floor Plan



POPLAR  
FIRST FLOOR PLAN  
1/8" = 1'

**DISCLAIMER:** SRE represents the Landlord in this offering. Information contained herein has been obtained from reliable sources and is not guaranteed. Neither Landlord nor SRE make any representations or warranties regarding the accuracy of this information. Prospective tenants should carefully verify all information contained herein.

**DEVIN HASKELL**

Senior Associate

206.486.1428

devin@srecommercial.com